

Medical Practitioner Registrant Data: March 2013

Published April 2013

Introduction

The role of the Medical Board of Australia is to:

- register medical practitioners and medical students
- develop standards, codes and guidelines for the medical profession
- investigate notifications and complaints
- where necessary, conduct panel hearings and refer serious matters to Tribunal hearings
- assess International Medical Graduates who wish to practise in Australia
- approve accreditation standards and accredited courses of study.

The Board's functions are supported by [Australian Health Practitioner Regulation Agency](http://www.ahpra.gov.au) (AHPRA). For information about legislation governing our operations see [AHPRA's Legislation & Publications](http://www.ahpra.gov.au/Legislation-and-Publications.aspx) at www.ahpra.gov.au/Legislation-and-Publications.aspx

The Board has analysed its registration data and produced a number of statistical breakdowns about registrants to share with the profession and community. The Board publishes these statistics regularly.

For more information on medical registration, please see the Board's website: www.medicalboard.gov.au/Registration.aspx

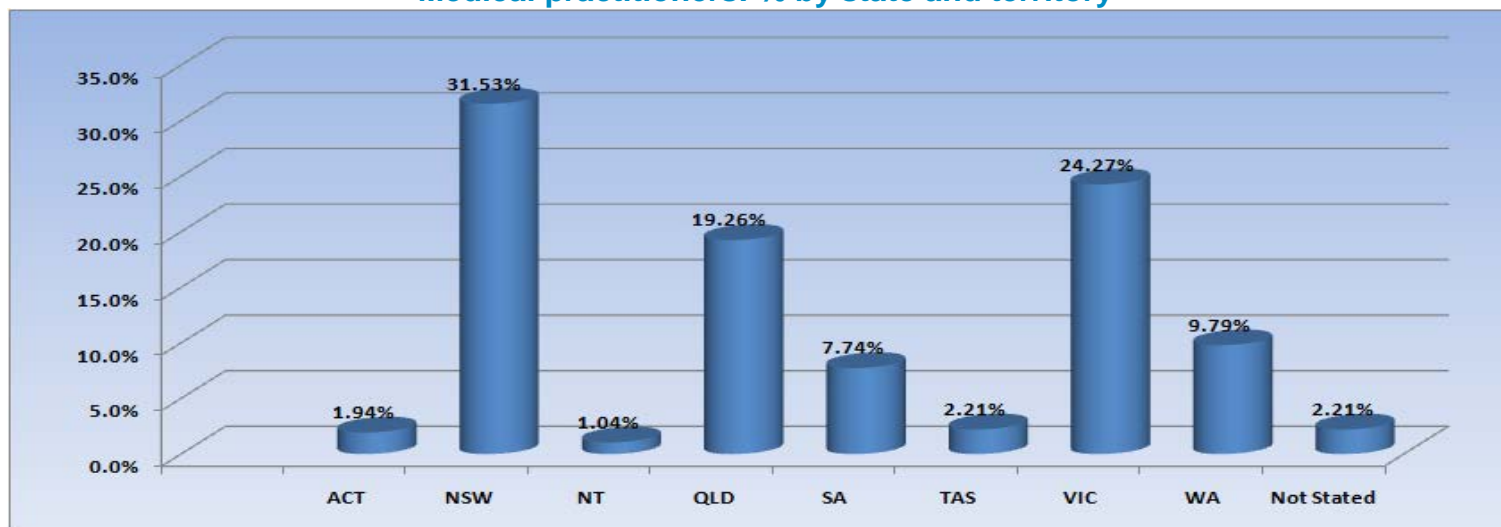
Index of Tables

Medical practitioners: state and territory by registration type	2
Medical practitioners: % by state and territory	2
Medical practitioners: age by registration type.....	3
% By age group.....	3
Medical practitioners: gender by state and territory by registration type.....	4
Medical practitioners: specialist registration by area of specialist practice.....	5
Medical practitioners: endorsement type by state and territory	6

Medical practitioners: state and territory by registration type

State	General	General and Specialist	Specialist	Provisional	Limited			Limited (Public Interest - Occasional Practice)	Non-practising	Total	% By State	
					Area of need	Postgraduate training or supervised practice	Public interest					
ACT	571	885	131	112	19	58	1	1	35	32	1,845	1.94%
NSW	9,161	15,645	1,513	1,086	155	1,341	1	7	572	580	30,061	31.53%
NT	388	341	102	53	87	12	1			8	992	1.04%
QLD	6,029	8,434	1,805	740	709	267	3	4	147	225	18,363	19.26%
SA	2,114	3,892	464	291	101	380		3	1	130	7,376	7.74%
TAS	556	1,042	204	94	64	64	1		43	43	2,111	2.21%
VIC	7,021	12,185	1,354	830	319	898		3	6	522	23,138	24.27%
WA	2,688	4,024	962	329	677	184	5	5	280	183	9,337	9.79%
Not Supplied or overseas	596	515	301	6	10	6	1		9	663	2,107	2.21%
Total	29,124	46,963	6,836	3,541	2,141	3,210	13	23	1,093	2,386	95,330	

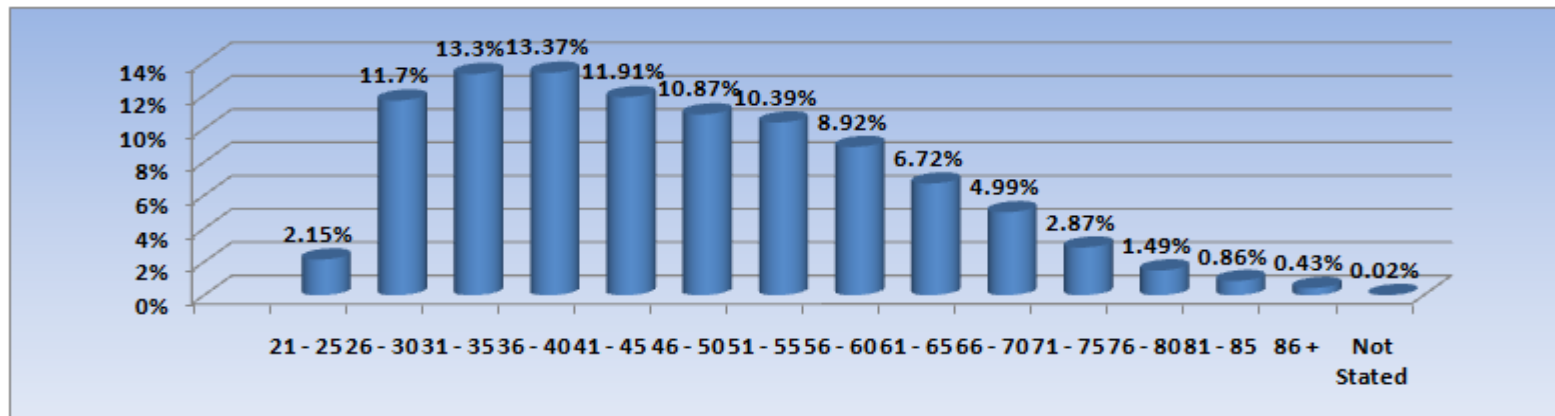
Medical practitioners: % by state and territory



Medical practitioners: age by registration type

Age Group	General	General and Specialist	Specialist	Provisional	Limited				Limited (Public Interest - Occasional Practice)	Non-practising	Total	% By Age Group
					Area of need	Postgraduate training or supervised practice	Public interest	Teaching or research				
21 - 25	733			1,287	21	9					2,050	2.15%
26 - 30	8,321	19	15	1,532	532	680		1		55	11,155	11.7%
31 - 35	8,562	1,947	334	427	402	849		7	1	148	12,677	13.3%
36 - 40	4,380	5,594	1,044	159	363	944		8	2	255	12,749	13.37%
41 - 45	2,265	6,467	1,556	68	329	433	2	2	9	224	11,355	11.91%
46 - 50	1,547	6,656	1,532	41	204	181	1	1	11	191	10,365	10.87%
51 - 55	1,158	7,176	1,088	20	130	70	3		13	245	9,903	10.39%
56 - 60	842	6,634	680	6	85	30	2	2	25	196	8,502	8.92%
61 - 65	518	5,233	350	1	52	10	3	2	44	191	6,404	6.72%
66 - 70	355	3,833	158		16	4	2		157	234	4,759	4.99%
71 - 75	226	1,995	55		6				240	215	2,737	2.87%
76 - 80	112	867	19						232	191	1,421	1.49%
81 - 85	66	394	4		1				227	130	822	0.86%
86 +	36	138	1						131	108	414	0.43%
Not Supplied or overseas	3	10							1	3	17	0.02%
Total	29,124	46,963	6,836	3,541	2,141	3,210	13	23	1,093	2,386	95,330	

% By age group



Medical practitioners: gender by state and territory by registration type

Sex	State	General	General and Specialist	Specialist	Provisional	Limited				Limited (Public Interest - Occasional Practice)	Non-practising	Total Count	% By Sex By State
						Area of need	Postgraduate training or supervised practice	Public interest	Teaching or research				
Female	ACT	287	333	44	71	7	25		1	10	12	790	0.83%
	NSW	4,636	5,108	499	597	50	597	1	2	118	234	11,842	12.42%
	NT	218	149	31	36	35	5				5	479	0.5%
	QLD	2,852	2,753	578	357	308	92			17	85	7,042	7.39%
	SA	1,073	1,229	141	164	28	156		3		45	2,839	2.98%
	TAS	292	375	62	50	21	31			5	17	853	0.89%
	VIC	3,653	4,114	430	437	89	401		2		195	9,321	9.78%
	WA	1,395	1,321	302	191	315	65	2	3	49	72	3,715	3.9%
	Not Supplied or overseas	228	134	83	5	5	1			2	240	698	0.73%
Sub total	14,634	15,516	2,170	1,908	858	1,373	3	11	201	905	37,579	39.42%	
Male	ACT	284	551	87	41	12	33	1		25	20	1,054	1.11%
	NSW	4,525	10,536	1,014	489	105	744		5	454	346	18,218	19.11%
	NT	170	192	71	17	52	7	1			3	513	0.54%
	QLD	3,176	5,681	1,226	383	401	175	3	4	130	140	11,319	11.87%
	SA	1,036	2,663	323	127	73	224			1	85	4,532	4.75%
	TAS	264	667	142	44	43	33	1		38	26	1,258	1.32%
	VIC	3,367	8,071	924	393	230	496		1	6	327	13,815	14.49%
	WA	1,292	2,703	660	138	362	119	3	2	231	111	5,621	5.9%
	Not Supplied or overseas	368	381	218	1	5	5	1		7	423	1,409	1.48%
Sub total	14,482	31,445	4,665	1,633	1,283	1,836	10	12	892	1,481	57,739	60.57%	
Not Stated	ACT		1									1	0.0%
	NSW		1									1	0.0%
	QLD	1		1								2	0.0%
	SA	5										5	0.01%
	VIC	1					1					2	0.0%
	WA	1										1	0.0%
	Sub total	8	2	1			1					12	0.01%
Total		29,124	46,963	6,836	3,541	2,141	3,210	13	23	1,093	2,386	95,330	

Medical practitioners: specialist registration by area of specialist practice

Specialty	ACT	NSW	NT	QLD	SA	TAS	VIC	WA	No PPP	Grand Total
Addiction medicine	3	64	1	27	14	10	31	12	3	165
Anaesthesia	73	1,273	32	866	348	107	1,044	441	85	4,269
Dermatology	5	178	1	76	38	7	119	37	7	468
Emergency medicine	29	344	24	305	92	38	369	155	33	1,389
General practice	411	7,392	219	4,678	1,874	616	5,631	2,260	119	23,200
Intensive care medicine	20	217	7	157	64	19	166	57	21	728
Medical administration	12	96	6	85	19	3	64	26	7	318
Obstetrics and gynaecology Total	31	523	14	334	132	38	462	155	40	1,729
Gynaecological oncology		15		9	4	1	11	2		42
Maternal-fetal medicine	1	15	1	6	3		8	4	1	39
Obstetrics and gynaecological ultrasound		13		5	4		53	3	2	80
Reproductive endocrinology and infertility		27		4	6	1	13	2		53
Urogynaecology	1	10		5	1		8	4		29
No sub-specialty declared	29	443	13	305	114	36	369	140	37	1,486
Occupational and environmental medicine	16	94	1	39	27	7	67	40	5	296
Ophthalmology	13	347	4	154	70	20	214	71	9	902
Oral and maxillofacial surgery				1						1
Paediatrics and child health Total	40	703	25	378	164	34	537	218	33	2,132
Clinical genetics		10		1			4	1		16
Community child health		7		7			4			18
General paediatrics	29	555	19	309	131	30	420	161	21	1,675
Neonatal and perinatal medicine	6	32		15	8	3	35	16	1	116
Paediatric cardiology		5	1	4			5	4		19
Paediatric clinical pharmacology		1								1
Paediatric emergency medicine		7		6	4		6	5	1	29
Paediatric endocrinology	1	6	1	4	1		1	2		16
Paediatric gastroenterology and hepatology		4		3	1		5	1	1	15
Paediatric haematology		3		1			1	1		6
Paediatric immunology and allergy		3		2	3		2			10
Paediatric infectious diseases		3		3			6			12
Paediatric intensive care medicine		3								3
Paediatric medical oncology		4		2			3	3		12
Paediatric nephrology		3								3
Paediatric neurology		10		3	1		4	1	2	21
Paediatric rehabilitation medicine		4			1					5
Paediatric respiratory and sleep medicine		9		3			3	1		16
Paediatric rheumatology		3		1	1		2	1		8
No sub-specialty declared	4	31	4	14	13	1	36	21	7	131
Pain medicine	1	78		46	29	8	37	27	5	231
Palliative medicine	6	90	1	41	22	12	55	25	4	256
Pathology Total	54	755	10	398	192	51	514	226	19	2,219
Anatomical pathology (including cytopathology)	15	257	3	157	62	16	182	83	5	780
Chemical pathology	2	20		14	9	2	19	15	3	84
Forensic pathology		8	1	13	4	2	10	3		41
General pathology	12	183	3	84	59	13	130	37	4	525
Haematology	11	155	2	74	34	11	114	33	3	437
Immunology	6	46		11	9	1	18	15		106
Microbiology	5	73	1	39	15	6	38	29	1	207
No sub-specialty declared	3	13		6			3	11	3	39
Physician Total	178	2,677	61	1,454	798	156	2,521	699	111	8,655
Cardiology	17	369	4	233	104	17	304	74	20	1,142
Clinical genetics		33		8	8		15	5		69
Clinical pharmacology		11		11	9		10	5	2	48
Endocrinology	9	182	5	103	32	11	171	40		553

Specialty	ACT	NSW	NT	QLD	SA	TAS	VIC	WA	No PPP	Grand Total
Gastroenterology and hepatology	21	235	1	128	59	12	208	58	7	729
General medicine	38	382	12	317	244	32	545	113	25	1,708
Geriatric medicine	9	178	2	72	46	7	161	53	5	533
Haematology	10	163	2	80	37	9	129	29	6	465
Immunology and allergy	7	52	1	14	11	1	27	20	2	135
Infectious diseases	7	80	11	46	29	7	125	25	5	335
Medical oncology	9	138	2	83	38	9	182	36	5	502
Nephrology	7	142	11	70	27	9	136	32	7	441
Neurology	9	179	1	62	35	7	160	38	6	497
Nuclear medicine	7	98		29	27	7	57	17	1	243
Respiratory and sleep medicine	12	183	3	118	48	12	149	52	6	583
Rheumatology	8	109	1	48	33	7	95	28	4	333
No sub-specialty declared	8	143	5	32	11	9	47	74	10	339
Psychiatry	56	992	16	590	277	57	907	268	39	3,202
Public health medicine	27	132	26	85	33	11	80	39	7	440
Radiation Oncology	10	110	1	65	21	8	97	19	3	334
Radiology	48	632	4	389	173	45	533	217	83	2,124
Diagnostic radiology	39	563	4	334	155	37	439	194	73	1,838
Diagnostic ultrasound		1					3			4
Nuclear medicine	4	35		50	12	6	60	6	3	176
No sub-specialty declared	5	33		5	6	2	31	17	7	106
Rehabilitation medicine	7	208	2	50	32	6	116	13	3	437
Sexual health medicine	5	53	1	18	6	1	24	5		113
Sport and exercise medicine	11	40	1	12	4	2	34	9	1	114
Surgery	94	1,725	33	985	451	97	1,377	429	65	5,256
Cardio-thoracic surgery	6	54		39	11	2	58	12	4	186
General surgery	22	624	16	337	160	36	512	131	26	1,864
Neurosurgery	5	73		39	16	4	60	18	1	216
Oral and maxillofacial surgery	5	21	2	25	8		23	8	1	93
Orthopaedic surgery	25	406	8	263	118	20	290	117	16	1,263
Otolaryngology - head and neck surgery	8	158	2	86	40	8	113	40	9	464
Paediatric surgery	4	33		13	10	2	26	8	1	97
Plastic surgery	8	120	2	63	40	9	126	41	2	411
Urology	7	118	1	75	32	10	101	35		379
Vascular surgery	3	68	1	44	16	5	53	14	2	206
No sub-specialty declared	1	50	1	1		1	15	5	3	77
Grand Total	1,150	18,723	490	11,233	4,880	1,353	14,999	5,448	702	58,978

Medical practitioners: endorsement type by state and territory

Endorsement	NSW	QLD	SA	TAS	VIC	WA	Total
Acupuncture	24	26	9	7	229	18	313
Total	24	26	9	7	229	18	313